

# Tempest

Maximum shade for commercial environments



**SHADE7**  
premium outdoor living





This heavy-duty giant telescopic umbrella is built super-strong and is engineered to withstand wind gusts of 80-100km/h while open. The canopy arms are made from reinforced aluminium that is connected to an impressive 94mm mast with internal reinforcing channels for extra strength. The Tempest is quite simply the best non-permanent umbrella on the market today.



The Tempest offers maximum shade and weather protection for commercial environments.



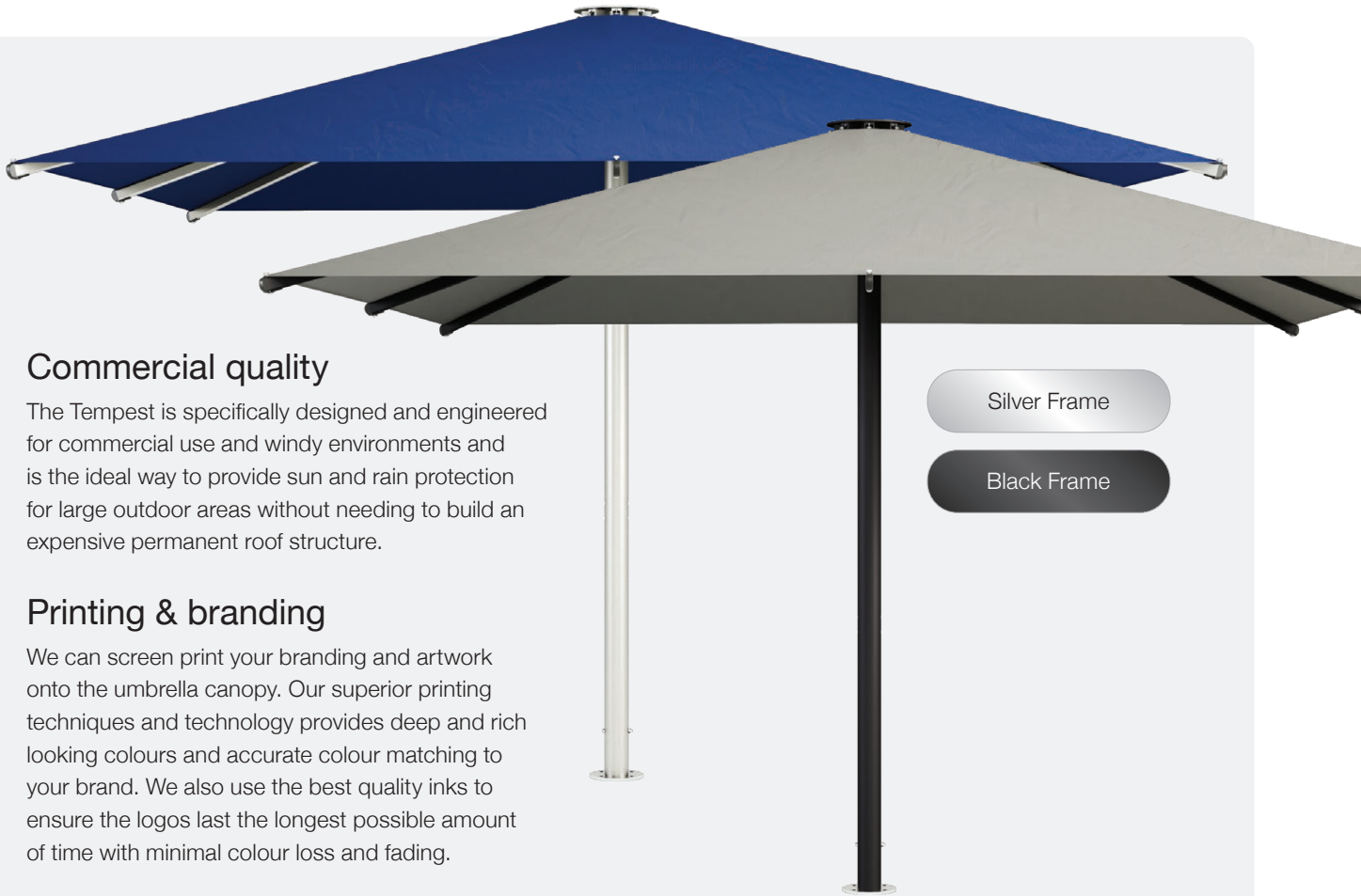
The Tempest commercial umbrella is unlike anything on the market today. Made with marine grade aluminium frame and strong stainless steel components and fixings, this umbrella is durable and extremely strong. The Tempest is often purchased in multiples of two or more to create large covered outdoor areas for universities, restaurants and many other commercial environments that require a large but durable shade solution.



## Tempest advantages

- All materials are corrosion resistant-ideal for coastal locations
- Canopy opens and closes above furniture
- Extremely sturdy and robust – able to withstand 80-100km/h wind gusts
- Huge canopy provides maximum shade protection
- Water repellent canopy also offers rain protection
- Multiple umbrellas can be joined together with gutters
- Choice of canopy materials with 3-5 year commercial warranty
- Options to install retractable walls
- 3 year back-to-base warranty on the frame





## Commercial quality

The Tempest is specifically designed and engineered for commercial use and windy environments and is the ideal way to provide sun and rain protection for large outdoor areas without needing to build an expensive permanent roof structure.

## Printing & branding

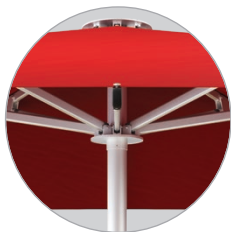
We can screen print your branding and artwork onto the umbrella canopy. Our superior printing techniques and technology provides deep and rich looking colours and accurate colour matching to your brand. We also use the best quality inks to ensure the logos last the longest possible amount of time with minimal colour loss and fading.

Silver Frame

Black Frame



## Tempest features



### Huge scale and coverage

Perfect for outdoor commercial areas requiring large amounts of shade or rain protection. Largest sizes offer 25m<sup>2</sup> of cover.



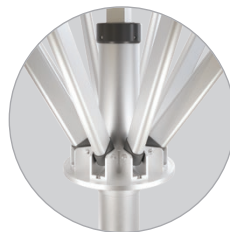
### Can withstand wind gusts of up to 100kph

The Tempest is designed for extended commercial use, with double reinforced arm joints, heavy duty aluminium arms and a massive anodised aluminium mast.



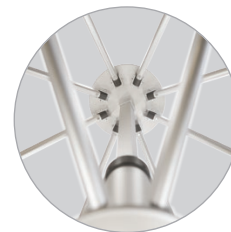
### Simple winder handle operation

Easy to open & close using a simple winder handle, essential for such a huge, highly wind-rated umbrella.



### Aluminium hub and arm connectors

Constructed of marine grade materials, with reinforced joints, anodised aluminium mast, anodised aluminium and stainless steel components, this umbrella is built to last.



### Telescopic mast & top hub

The Tempest telescopic umbrella draws its long arms up after it, rising as it closes, making it perfectly safe to close over outdoor tables.

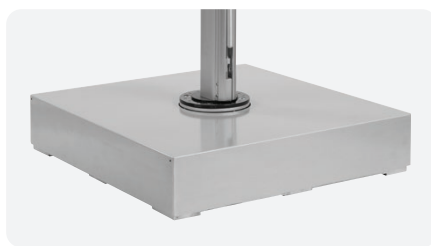
## Installation options

There are three different ways to install your umbrella. Most commonly a Tempest umbrella is installed onto a concrete patio using a base plate and bolts. Secondly you can install into the ground using an in-ground fitting and concrete. You can also install two or more installation fittings to give you multiple umbrella locations for different seasons or events. Finally, there is a freestanding base available for when it's not possible to use an installation fitting.



### In-ground fitting

The Tempest umbrella can be installed into a paved patio, a garden or lawn by using our in-ground fitting. We supply all the instructions on how to dig the correct size hole, pour the concrete and set the fitting into the concrete.



### Freestanding paver base

Freestanding 85x85cm base with aluminium cover. Suitable for 3.5m or 4m Tempest umbrellas in sheltered locations only. Weighs approx. 230kg with 12x pavers added, (40x40x5cm). Pavers not included.



### Base plate

The Tempest umbrella can be easily bolted down to a concrete patio. We supply the bolts and instructions. This method looks great, offers excellent stability and no space is wasted in your outdoor area.

## Optional accessory



### Cover bag

Recommended for acrylic canvas fabric canopies. Will prolong the life of your umbrella fabric.

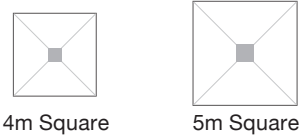


### Integrated infrared heaters

Tempest umbrellas can easily be fitted with NZ made 316 stainless steel electric heaters complete with required brackets.



## Specifications & technical information



Dimensions of open umbrella		
a: Width of canopy (cm)	1400	1500
b: Height to top of umbrella (cm)	300	315
c: Canopy edge height (cm)	230	230
Canopy shade area (m <sup>2</sup> )	16	25
Dimensions of closed umbrella		
d: Closed ground clearance (cm)	130	90
e: Maximum height when closed (cm)	420	445
Closes above tables?	Yes	Yes
Wind rating guide		
Installed wind rating <sup>2</sup>	100kph	80kph

<sup>1</sup>Measured from point to point. All measurements are rounded and are subject to change.

<sup>2</sup>Wind damage is not covered by the warranty.

<sup>3</sup>Colours with red colour pigmentation (red, orange, yellow etc) will have lower colour fastness than other colours and will show some fading earlier.

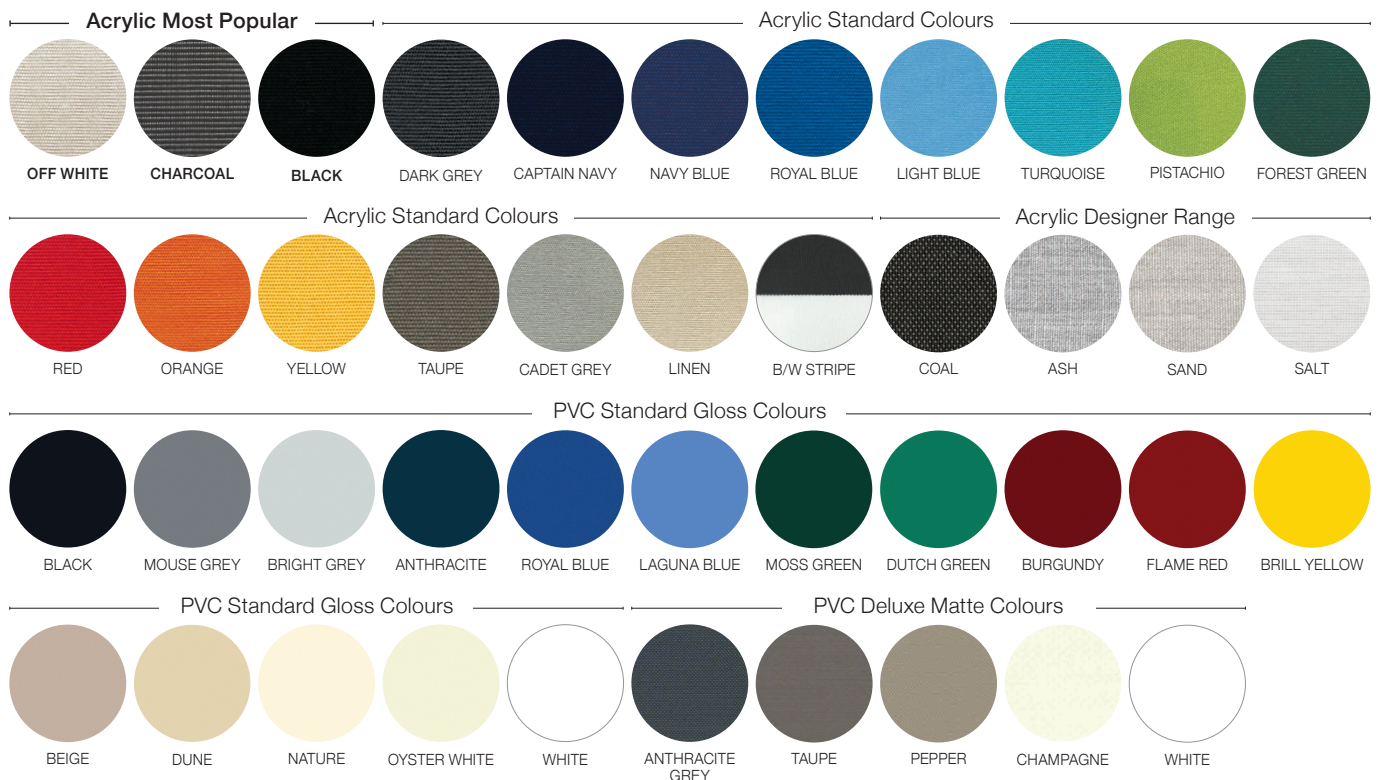
## European made acrylic canvas

Our premium solution-dyed acrylic canvas comes with a 3 year fade warranty for Tempest umbrellas and is ideal for semi-sheltered locations. It has the best available colour fastness rating of 7-8 out of 8<sup>3</sup> and also the highest possible UV protection rating of UPF 80.

## German made heavy duty PVC

Our German made 'Valmex' 580g/m<sup>2</sup> flame retardant PVC is exceptionally durable and comes with a 5 year warranty. Recommended for tough commercial environments which are exposed to the wind.

## Fabric colours (Fabric colours may vary slightly from printed swatches shown).



# SHADE7

premium outdoor living



**Shade7 showroom/factory:**

1096 Great South Rd, Mt Wellington, Auckland 1060, NZ  
+64 (0) 9 570 1112 / sales@shade7.co.nz / www.shade7.co.nz